



# Le *P*ipiou

Camping - Club



PARENTIS EN BORN - LANDES







# Fall under the spell of

## GET AWAY FROM IT ALL IN OUR REGION

Near Biscarrosse,  
a stone's throw away  
from the Bordeaux  
vineyards, discover a  
blend of prized resources:  
the taste of a healthy  
life combined with  
unspoilt countryside will  
enable you to enjoy your  
encounters with local  
people.



## GET OFF THE BEATEN TRACK...



## A TASTE OF FREEDOM

To discover the great lakes region nice  
and smoothly, get on your bike and  
breathe in the country air... more than  
500 km of marked paths are waiting  
to welcome you with open arms from  
Parentis





# the Great Lakes region

## TITILLATE YOUR TASTE BUDS...

Our recipes are true to our values:  
generous, gourmet and unforgettable.



## DISCOVER THE SPIRIT OF LANDES

Landes - a forest of culture and an  
ocean of traditions,  
to explore to your heart's content.



## HAVE A WHALE OF A TIME AT ATLANTIC PARK

This is the biggest water park in Landes, designed for  
you to enjoy a whole day of family fun. 2800 m<sup>2</sup> of pools  
heated to 27°C. Ask for your discounted tickets at the  
campsite reception! [www.atlantic-park.com](http://www.atlantic-park.com)



# Parentis en Bor



## A LAKE

Directly accessible from the campsite, Parentis will give you the chance to discover a natural gem.

Take a stroll along the shore to discover the rich biodiversity of Landes.



## WATER SPORTS

Paddleboarding, canoeing and wakeboarding as well as tubing and pedalos - there's something for everyone.

To be enjoyed to your heart's content, whether you're young or old: holiday memories guaranteed!



## FISHING

An essential fishing spot, the lake of Parentis offers the perfect opportunity to get started or improve your skills. For the length of your stay - whether you're alone, with friends or with family - you'll be as happy as a fish in water!





n also offers...



## A MARKET

Parentis also lives to the rhythm of its markets... It's a way to take a little bit of the holidays home with you! You'll discover some culinary specialities (preserves, duck breast fillets, duck foie gras) and local crafts there - so many gifts to share. Traditional markets or night markets, the choice is yours!

## THE OCEAN CLOSE AT HAND

A real paradise for surfers and outdoor sports enthusiasts, the fine sandy beaches are just a few kilometers away from the campsite. Don't worry - they're huge, and you'll have no trouble finding somewhere to lay your towel and bask in the sun.



## ITS LOVE OF PARTIES

Whether they're traditional, musical or related to bullfighting, festivities in Landes are inseparable from the culture and spirit of the region. In Parentis, you'll find this joy of living and love of simply having fun.





# A campsite m

## THE POOL AREA

Over 600m<sup>2</sup> of temperate open-air pools make this a dream destination: 1 large pool for keen swimmers, 1 jacuzzi for relaxation and 2 slides for some real thrills...

For parents' peace of mind, younger children have their very own area: a water play area with a paddling pool.



## FOR YOUR WELL-BEING

In high season,  
take a moment to relax...

Beauty professionals are available from  
Monday to Friday to welcome you (by  
appointment) in a cosy, relaxing space.

*In July and August*



# made for you...

## THE MINI CLUB

In high season, your little ones will be in heaven. They'll meet our indispensable mascot, Paquito, and will be led by a dynamic team who'll help them get their fill of activities!

*In July and August*



## ACTIVITIES FOR ALL

You can enjoy our varied, exciting programme all day long.

Join us to have a ball through sporty and fun activities!

Our themed evenings will also amaze you and make you laugh, sing or dance!

*In July and August*



# The little things that



All season long, we offer you a wide variety of services to make your stay even better: a bar, snack bar, restaurant, fitness room, multi-sports pitch, boules pitch, mini golf, table tennis tables, bouncy castle and play area, as well as a launderette, are all at your disposal.





# make a difference...



## EVEN MORE SERVICES...


Because your satisfaction is our priority, we propose a huge variety of activities, including some unusual ones: bike hire, paddleboarding, canoeing, an introduction to fishing and diving, Slip 'N Slide, bubble football...

Join us for an unforgettable holiday!

*In July and August*





A woman with long blonde hair, wearing an orange t-shirt, a patterned scarf, and yellow shorts, stands in a modern kitchen. She is smiling and reaching up towards a white range hood. The kitchen has white cabinets, a wooden countertop, and a window looking out onto greenery. The image is overlaid with four horizontal colored bands (green, pink, purple, grey) containing text.

Live in harmony with nature... Add a touch of the exotic to your holidays and come to recharge your batteries in the fresh air...

Accommodation that gets back to basics! Comfort and togetherness are the key words. Our rentals look nice and have been carefully designed to ensure their functionality so that you can enjoy a great holiday with family or friends.

A truly cosy atmosphere with decor done in soft, modern tones, a high-quality experience, this range of accommodation will delight every member of the family...

Forget all your obligations - if you love life in the fresh air and the very best in contemporary comfort, we've got just what you need! This accommodation is just the thing to satisfy your desire for holidays where you feel at home.



# Nature Range

Live in harmony with nature...

# Comfort Range

Nice, simple holidays...

# Comfort Plus Range

If you're looking for little extras...

# Prestige Range

You can't go wrong...

O  
U  
R  
  
R  
A  
N  
G  
E  
S



# *Booking smart*

*Your Holidays 2022*

## *Our special offers*

**-25% & -30%**

*25 % discount on any stay of 7 consecutive nights\* in rental accommodation*

*-30% discount on any stay of 14 consecutive nights\* in rental accommodation*

*\*valid from 29/04/2022 to 02/07/2022 and from 28/08/2022 to 02/10/2022*

## *Reservation fees offers*

*For any online reservation*





View the  
'smart booking'  
page

| Rates per night<br>Max. 6 people (babies included)   | Du 29/04<br>au 01/07 | From 02/07<br>to 08/07 | From 09/07<br>to 29/07 | From 30/07<br>to 12/08 | From 13/08<br>to 19/08 | From 20/08<br>to 26/08 | From 27/08<br>to 02/10 |
|--|----------------------|------------------------|------------------------|------------------------|------------------------|------------------------|------------------------|
| 1 or 2 pers. package:<br>- 1 tent + car<br>- or 1 caravan + car<br>- or 1 camper van / fitted van      | 20,00€               | 25,00€                 | 35,00€                 | 38,00€                 | 35,00€                 | 25,00€                 | 20,00€                 |
| Additional adult (+ 18 years)  | 5,00€                | 7,00€                  | 7,50€                  | 8,00€                  | 7,50€                  | 7,00€                  | 5,00€                  |
| Additional child (ages 3 - 17 inclusive)   | 3,00€                | 4,00€                  | 4,50€                  | 5,00€                  | 4,50€                  | 4,00€                  | 3,00€                  |
| Electricity connection (10 Amp.)   | Free                 | 5,00€                  | 5,00€                  | 5,00€                  | 5,00€                  | 5,00€                  | Free                   |
| Fridge hire (subject to availability, the additional fee for electricity connection must also be paid) | 5,00€                | 5,00€                  | 5,00€                  | 5,00€                  | 5,00€                  | 5,00€                  | 5,00€                  |
| Additional tent  | Free                 | 5,00€                  | 5,00€                  | 5,00€                  | 5,00€                  | 5,00€                  | Free                   |
| Additional car (on request, subject to plot dimensions)  | Free                 | 5,00€                  | 5,00€                  | 5,00€                  | 5,00€                  | 5,00€                  | Free                   |
| Pet (on a leash)   | Free                 | 5,00€                  | 5,00€                  | 5,00€                  | 5,00€                  | 5,00€                  | Free                   |

- Reservations can be made for a minimum of 2 nights in the off-season and low-season, and for minimum 6 nights in July/August.
- Children under 3 years at the time stay for free.
- Pets allowed: 1 pet per campsite, those classed as category 1 or 2 are prohibited.
- For an electricity connection, please provide your own adaptor for a European socket, and an extension cord.
- Additional booking fee: €20 for all bookings for a stay of more than 4 nights, €10 for mini-breaks and weekends (2-4 nights) and FREE for all online reservations via our website.
- Tourist tax included.
- One vehicle per campsite, a second vehicle may be accepted depending on the dates of your stay by special request to the campground, and for an additional fee.



Age of rental : 8 years

**Description:**

- |  |   |
|--|---|
| - bedroom no. 1: 1 double bed<br>140 x 190                             | - kitchenette (fridge-freezer,<br>hob, crockery and kitchen<br>utensils, electric coffee<br>maker, microwave) |
| - bedroom no. 2: 2 single beds<br>70 x 190 (one of which is<br>raised) |   |

**All our rentals are equipped with duvets and pillows - Non-contractual photos and plans**

## RATES PER NIGHT

|                     |  |                     |                     |                     |                     |                     |                     |
|---------------------|--|---------------------|---------------------|---------------------|---------------------|---------------------|---------------------|
| From 10/06 to 02/07 | From 03/07 to 09/07  | From 10/07 to 23/07 | From 24/07 to 30/07 | From 31/07 to 13/08 | From 14/08 to 20/08 | From 21/08 to 27/08 | From 28/08 to 11/09 |
| 45€                 | 65€  | 90€                 | 95€                 | 115€                | 95€                 | 85€                 | 45€                 |
| Minimum 2 nights    | Week-long stay only - Day of arrival SUNDAY (Arrival: 4pm - Departure: 7am-10am) |                     |                     |                     |                     |                     | Minimum 2 nights    |



Age of rental : 5 years

**Description:**

- bedroom n°1 : 1 double bed (140 x 190)
- bedroom n°2 : 1 double bed (140 x 190) + a raised single bed (80 x 190)
- kitchenette (refrigerator, gas stove, crockery and cooking utensils, electric coffee maker, microwave oven)
- built-in covered terrace

**All our rentals are equipped with duvets and pillows** - Non-contractual photos and plans

## RATES PER NIGHT

|                     |  |                     |                     |                     |                     |                     |                     |
|---------------------|--|---------------------|---------------------|---------------------|---------------------|---------------------|---------------------|
| From 10/06 to 02/07 | From 03/07 to 09/07  | From 10/07 to 23/07 | From 24/07 to 30/07 | From 31/07 to 13/08 | From 14/08 to 20/08 | From 21/08 to 27/08 | From 28/08 to 11/09 |
| 55€                 | 75€  | 100€                | 110€                | 125€                | 110€                | 95€                 | 55€                 |
| Minimum 2 nights    | Week-long stay only - Day of arrival SUNDAY (Arrival: 4pm - Departure: 7am-10am) |                     |                     |                     |                     |                     | Minimum 2 nights    |



# Comfort Range

Between the Mobil-Home and Cottage ranges, there's just one difference: the age of the rental property

View the 'smart booking' page

## Mobil-home Comfort 2 bed. - 4/5 persons - 28 m<sup>2</sup>



Age of rental : 11 years

### Description:

- bedroom n°1 : 1 double bed 140 x 190
- bedroom n°2 : 2 single beds 80 x 190
- living area with convertible sofa 120 x 190
- kitchenette (fridge-freezer, hotplate, extractor hood,

- crockery and kitchen utensils, electric coffee maker, microwave oven)
- shower room + separate toilet
- covered terrace : 13 m<sup>2</sup>

All our rentals are equipped with duvets and pillows - Non-contractual photos and plans

### RATES PER NIGHT

| From 29/04 to 11/06 | From 12/06 to 02/07 | From 03/07 to 09/07  | From 10/07 to 23/07 | From 24/07 to 30/07 | From 31/07 to 13/08 | From 14/08 to 20/08 | From 21/08 to 27/08 | From 28/08 to 10/09 | From 11/09 to 02/10 |
|---------------------|---------------------|--|---------------------|---------------------|---------------------|---------------------|---------------------|---------------------|---------------------|
| 45€                 | 60€                 | 85€  | 110€                | 115€                | 125€                | 115€                | 105€                | 60€                 | 45€                 |
| Minimum 2 nights    |                     | Week-long stay only - Day of arrival SUNDAY (Arrival: 4pm - Departure: 7am-10am) |                     |                     |                     |                     |                     | Minimum 2 nights    |                     |

## Cottage Comfort 2 bed. - 4/5 persons - 28 m<sup>2</sup>



Age of rental : 5 years

### Description:

- bedroom n°1 : 1 double bed 140 x 190
- bedroom n°2 : 2 single beds 80 x 190
- living area with convertible sofa 120 x 190
- kitchenette (fridge-freezer, hotplate, extractor hood,

- crockery and kitchen utensils, electric coffee maker, microwave oven)
- shower room + separate toilet
- covered terrace : 13 m<sup>2</sup>

All our rentals are equipped with duvets and pillows - Non-contractual photos and plans

### RATES PER NIGHT

| From 29/04 to 10/06 | From 11/06 to 01/07 | From 02/07 to 08/07  | From 09/07 to 22/07 | From 23/07 to 29/07 | From 30/07 to 12/08 | From 13/08 to 19/08 | From 20/08 to 26/08 | From 27/08 to 09/09 | From 10/09 to 02/10 |
|---------------------|---------------------|--|---------------------|---------------------|---------------------|---------------------|---------------------|---------------------|---------------------|
| 50€                 | 65€                 | 95€  | 115€                | 120€                | 135€                | 125€                | 115€                | 65€                 | 50€                 |
| Minimum 2 nights    |                     | Week-long stay only - Day of arrival SATURDAY (Arrival: 4pm - Departure: 7am-10am) |                     |                     |                     |                     |                     | Minimum 2 nights    |                     |





# Comfort Plus Range

View the  
'smart booking'  
page

## Cottage Comfort Plus 2 bed. - 4/5 persons -28 m<sup>2</sup>



Age of rental : 7 years

**Description:** air-conditioned accommodation

- bedroom n°1: 1 double bed 140 x 190
- bedroom n°2: two 80 x 190 single beds
- living area with a 120 x 190 sofa bed
- kitchenette (fridge freezer, hotplate, extractor hood, tableware and kitchen utensils, electric coffee maker, microwave)
- blackout roller shutters in all the bedrooms
- shower room + separate toilet
- covered deck: 18m<sup>2</sup>

All our rentals are equipped with duvets and pillows - Non-contractual photos and plans

### RATES PER NIGHT

| From 29/04 to 10/06 | From 11/06 to 01/07 | From 02/07 to 08/07  | From 09/07 to 22/07 | From 23/07 to 29/07 | From 30/07 to 12/08 | From 13/08 to 19/08 | From 20/08 to 26/08 | From 27/08 to 09/09 | From 10/09 to 02/10 |
|---------------------|---------------------|--|---------------------|---------------------|---------------------|---------------------|---------------------|---------------------|---------------------|
| 60€                 | 75€                 | 110€   | 130€                | 140€                | 150€                | 140€                | 130€                | 75€                 | 60€                 |
| Minimum 2 nights    |                     | Week-long stay only - Day of arrival SATURDAY (Arrival: 4pm - Departure: 7am-10am) |                     |                     |                     |                     |                     | Minimum 2 nights    |                     |

## Cottage Comfort Plus 2 bed. disabled access - 4 persons - 32 m<sup>2</sup> suitable for persons with a disability



Age of rental : 6 years

**Description:** air-conditioned accommodation



- bedroom n°1 : 2 single beds 90 x 190
- bedroom n°2 : 2 single beds 80 x 190 (including 1 raised bed for children aged over 6 only)
- kitchenette (refrigerator, hotplate, extractor hood, crockery and kitchen utensils, electric coffee maker, microwave oven).
- living area with TV
- shower room + toilet
- covered terrace : 18 m<sup>2</sup> with access ramp
- Television

All our rentals are equipped with duvets and pillows - Non-contractual photos and plans

### RATES PER NIGHT

| From 29/04 to 11/06 | From 12/06 to 02/07 | From 03/07 to 09/07  | From 10/07 to 23/07 | From 24/07 to 30/07 | From 31/07 to 13/08 | From 14/08 to 20/08 | From 21/08 to 27/08 | From 28/08 to 10/09 | From 11/09 to 02/10 |
|---------------------|---------------------|--|---------------------|---------------------|---------------------|---------------------|---------------------|---------------------|---------------------|
| 60€                 | 75€                 | 110€   | 130€                | 140€                | 150€                | 140€                | 130€                | 75€                 | 60€                 |
| Minimum 2 nights    |                     | Week-long stay only - Day of arrival SUNDAY (Arrival: 4pm - Departure: 7am-10am) |                     |                     |                     |                     |                     | Minimum 2 nights    |                     |





# Comfort Plus Range

View the  
'smart booking'  
page

## Cottage Comfort Plus 3 bed. - 6/7 persons - 32,50 m<sup>2</sup>



Age of rental : 7 years

**Description:** air-conditioned accommodation

- bedroom n°1 : 1 double bed 140 x 190
- bedroom n°2 : 2 single beds 80 x 190
- bedroom n°3 : 2 single beds 80 x 190
- living area with convertible sofa 120 x 190
- kitchenette (refrigerator,

- hotplate, extractor hood, crockery and kitchen utensils, electric coffee maker, microwave oven).
- shower room + separate toilet
- covered terrace : 18 m<sup>2</sup>

All our rentals are equipped with duvets and pillows - Non-contractual photos and plans

### RATES PER NIGHT

| From 29/04 to 10/06 | From 11/06 to 01/07 | From 02/07 to 08/07  | From 09/07 to 22/07 | From 23/07 to 29/07 | From 30/07 to 12/08 | From 13/08 to 19/08 | From 20/08 to 26/08 | From 27/08 to 09/09 | From 10/09 to 02/10 |
|---------------------|---------------------|--|---------------------|---------------------|---------------------|---------------------|---------------------|---------------------|---------------------|
| 75€                 | 90€                 | 125€   | 145€                | 150€                | 170€                | 155€                | 145€                | 90€                 | 75€                 |
| Minimum 2 nights    |                     | Week-long stay only - Day of arrival SATURDAY (Arrival: 4pm - Departure: 7am-10am) |                     |                     |                     |                     |                     | Minimum 2 nights    |                     |





# Prestige Range

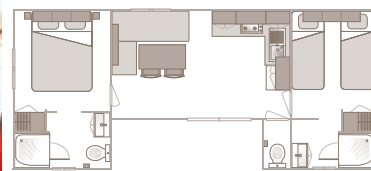
View the  
'smart booking'  
page



## Mobil home Prestige 2 bed. - 4/5 persons -34 m<sup>2</sup>



**Description:** air-conditioned accommodation



Age of rental : 10 years

- bedroom n°1 : Master SUITE double bed 140 x 190 + shower room and toilet
- bedroom n°2 : 2 single beds 80 x 190
- living area with TV
- shower room + separate toilet
- kitchenette (dishwasher, fridge freezer, hotplate,

extractor hood, crockery and kitchen utensils, electric coffee maker, kettle, toaster, microwave oven).

- covered terrace : 20 m<sup>2</sup>

All our rentals are equipped with duvets and pillows - Non-contractual photos and plans

### RATES PER NIGHT

| From 29/04 to 10/06 | From 11/06 to 01/07 | From 02/07 to 08/07  | From 09/07 to 22/07 | From 23/07 to 29/07 | From 30/07 to 12/08 | From 13/08 to 19/08 | From 20/08 to 26/08 | From 27/08 to 09/09 | From 10/09 to 02/10 |
|---------------------|---------------------|--|---------------------|---------------------|---------------------|---------------------|---------------------|---------------------|---------------------|
| 65€                 | 85€                 | 120€   | 140€                | 145€                | 150€                | 145€                | 125€                | 85€                 | 65€                 |
| Minimum 2 nights    |                     | Stay weekly only - Days of arrival SATURDAY or SUNDAY (Arrival: 4pm - Departure: 7am-10am) |                     |                     |                     |                     |                     | Minimum 2 nights    |                     |



## I/ BOOKING CONDITIONS

All bookings must be accompanied by the payment of a deposit and booking fees, as well as an acceptance of the terms and conditions. The booking will be considered finalised as soon as written confirmation is received from Camping Le Pipiou. Minors must be accompanied by their parents or legal guardians. Camping Le Pipiou provides holidays intended for families, it thus reserves the right to refuse any booking that would go against or stray from this principle. Bookings of campsite pitches and holiday rentals are non-transferable. In the event of deliberate misrepresentation by the customer, the contract will be automatically terminated and any payment made will be retained by the management.

## II/ PAYMENT TERMS

### 1- Administrative Fee

This can amount to €20 for the week for an offline application, €10 for weekends and short stays of under 4 nights and free for all online bookings made via our website [www.camping-pipiou.fr](http://www.camping-pipiou.fr). In the event of a cancellation (unless you have taken out special cancellation insurance), these fees will not be reimbursed.

### 2- Deposit/Balance

- If the booking is made more than 30 days prior to the arrival date, you will be required to pay a deposit of 30% of the total cost of the stay + an administrative fee; the outstanding balance must be paid no later than 30 days prior to the arrival date.

- If the booking is made less than 30 days prior to the arrival date, you will be required to pay the total cost of your stay when booking.

## III/ YOUR STAY

### 1- Arrivals: campsite pitches

Upon your arrival, we will ask you for 1 security deposit (cash or cheque) of €20 for your campsite entry pass. This deposit will be reimbursed at the end of the stay in exchange for the pass. Each party member will be provided with an access wristband (which they must wear at all times). Off-peak season: you may arrive on the day of your choosing, with a minimum stay of 2 nights. Your pitch will be available between 2pm and 6 pm. In July-August: you may arrive on a day of your choosing, with a minimum stay of 6 nights. Your pitch will be available between 2pm and 7pm. You must inform the campsite in the event of any late arrival. Pitches will be held for 24 hours after the agreed arrival date. After this time, they will be released and you will be charged for the full cost of your stay. One vehicle per pitch; a second vehicle may be permitted upon request, for an additional fee (see rates), depending on the dates of your stay.

### 2- Arrivals: holiday rentals

Upon your arrival, you will be required to pay 2 deposits (cash or cheque): a €300 deposit for breakages or damage to the property and equipment and a cleanliness deposit of between €60 and €100 (depending on the range of the rental property chosen). These 2 deposits will be reimbursed separately, after the property's state of cleanliness and the inventory have been checked. Each party member will be provided with an access wristband (which they must wear at all times). Lost bands will be charged at €5 per band. Off-peak season: you may arrive on the day of your choosing, with a minimum stay of 2 nights. Keys will be available for collection between 4pm and 7pm. In July-August: you must arrive on Saturday or Sunday according to the conditions of your booking contract, for a stay of at least a week. You may collect the keys between 4pm and 7pm. You must inform the campsite in the event of any late arrival. The rental is held for 24 hours following the agreed arrival date. After that time, it will be released and you will be charged for the total cost of your stay. Each holiday rental has an equipment inventory list. The holidaymaker is asked to check this inventory upon arrival and notify reception of any possible inconsistencies before midday the following day. One vehicle per rental.

### 3- During your Stay

It is the responsibility of the camper to arrange their own insurance. Camping Le Pipiou will be in no way held responsible for the loss, theft or damage of personal items, or damage as the result of a fire, bad weather, etc. All individuals staying at the campsite must comply with the regulations displayed at the entrance to the campsite. There must be total silence between 11pm and 7am. The speed limit on site is 10km/h and vehicle movement on site is prohibited between 11pm and 7am. Visitors are permitted on the site from 9am to 11pm. They must report to reception, state their names, the names of the individuals they are visiting and pay a fee. They must leave their vehicle in the external car park. Tents are not permitted on rental accommodation sites. The use of barbecues is strictly prohibited outside designated areas. During your stay, you may be photographed or filmed and the images used for promotional or publicity purposes. If you do not wish your image

to be used in this way, please notify us by registered post, accompanied by a copy of your proof of ID.

Pets are allowed on the site, subject to an additional fee paid by the owner (see rates). They must be kept on a leash, microchipped, vaccinated, and declared at reception. They must never be left alone at the rental property or camping pitch.

1st and 2nd category dogs (attack or guard dogs) are strictly prohibited. (cf. Ministerial Decrees of 30/06/92, 22/01/85 and 06/01/99)

### 4- Departures: tent pitches

The campsite must be vacated before midday on the day of departure. After this time, you will be charged for an extra night.

### 5- Departures: holiday rentals

Holidaymakers should depart between 7am and 10am on the date indicated on the booking confirmation, at a time determined by reception, depending on availability. The accommodation must be left spotless; customers will be charged for any damage or breakages, as well as for any repairs to the site deemed necessary. Retention of the security deposit does not exclude the possibility of further compensation payments if the cost of damages exceeds the sum of the deposit.

### 6- Storage - Occupation:

Unoccupied units can be left on the site only with the management's prior consent and only on the pitch indicated. This service comes at an extra fee, indicated below.

Any pitch that is being used to store a unit, without having signed a rental contract, or if this use is in breach of a contract, notably with regards scheduled payments, a "storage" fee of €40 per day shall be applied for standard pitches, and €60 per day for pitches equipped with water, electricity and waste disposal.

## IV/ CANCELLATION

### 1- Unused Services

No refund will be made in the event of a late arrival or early departure.

**2- Cancellation by the Client** (excluding clients with insurance cover). If the cancellation occurs 45 days or more before the planned date of arrival, the deposit and booking fee will be retained by the campsite. If the cancellation occurs less than 45 days before the arrival date, the total cost of the stay will be retained.

### 3- Cancellation by campsite

The Campsite reserves the right to cancel your stay in the case of force majeure or unforeseen circumstances that could pose a health and safety risk.

### Complaints

Any client wishing to make a complaint should contact the campsite complaint service:

- by post with confirmation of receipt to the campsite address. The campsite will reply to the client within two months. When no amicable solution can be found, and if the issue persists, without prejudice to take legal action, the Campsite will offer to call a mediator: SAS Médiation Solution : 222, chemin de la Bergerie - 01800 Saint Jean de Niois - [contact@sasmediationsolution-conso.fr](mailto:contact@sasmediationsolution-conso.fr) - <https://sasmediationsolution-conso.fr/>

### Right of withdrawal

In accordance with article L.121-19 of the consumer code, the Campsite informs its clients that the sale of accommodation services provided on a specific date, or during a defined period, is not subject to a 14-day withdrawal period.

### 4- Campez-Couvert cancellation and Interruption Insurance

Our partner Gritchen Affinity offers insurance for the cancellation or interruption of your stay, optional with your rental contract, which allows only those clients who have signed up for Campez Couvert insurance to be reimbursed for all or part of their stay. In the event of cancellation, please notify the campsite by post or email, as soon as the event occurs that prevents your departure. If the incident is covered in the terms and conditions (available at [www.campez-couvert.com](http://www.campez-couvert.com) or from the campsite), please notify the insurer within 48 hrs, and provide all the necessary information and substantiating documents.

## V/ DATA PROTECTION AND FREEDOM OF INFORMATION

The information that you give us when making your booking will not be passed on to any third party. This information will be treated as confidential. It will only be used by internal services for processing your booking and to enhance and personalise communication and the services exclusively available to Campings Grand Sud customers based on your interests. In accordance with European data protection regulations, you have the right to access, rectify and object to the processing of your personal data. In order to do so, all you need to do is to send us a request by post to the following address, giving your first name, surname and address: Camping Le Pipiou - 382 Route des Campings - 40160 Parentis-en-Born.



# Booking Contract 2022

Surname ..... First name .....  
 Address .....  
 Postcode ..... City .....  
 Country ..... Date of Birth .....  
 Phone ..... Mobile .....  
 E-mail .....  
 Vehicle, registration n° .....

## • Holiday Participants. Maximum 7 people depending on the chosen accommodation, or 6 people per campsite (babies included)

| Family name | First Name | Date of Birth |
|-------------|------------|---------------|
|             |            |               |
|             |            |               |
|             |            |               |
|             |            |               |
|             |            |               |
|             |            |               |
|             |            |               |

### Rental

From ..... to .....

- ☐ Natur'house 2 bed.     
 ☐ Mobil-home Comfort 2 bed.     
 ☐ Cottage Comfort Plus 2 bed.     
 ☐ Mobil home Prestige 2 bed.  
☐ Safari Lodge 2 bed.     
 ☐ Cottage Comfort 2 bed.     
 ☐ Cottage Comfort Plus 2 bed. PMR     
 ☐ Cottage Comfort Plus 3 bed.

### EXTRAS

- Pet: 8,50 € x ..... nights = ..... €  
 • Cleaning fee (☐ Nature Range: 60€ ☐ Comfort Range: 80€ ☐ Prestige Range: 100€) ..... €  
 • Baby kit (travel cot, baby bath and highchair): 5€ x ..... nights = ..... €

### Pitch

From ..... to .....


- ☐ Tent     
 ☐ Caravan     
 ☐ Camper van     
 ☐ Fitted van • Size of your equipment OBLIGATORY: ..... m x ..... m

### EXTRAS (cf. campsite rates)

- Extra tent ..... tent(s) x ..... € x ..... nights = ..... €  
 • Electricity (10 amp.) ..... € x ..... nights = ..... €  
 • Fridge (subject to availability, electricity supply must also be paid for) ..... € x ..... nights = ..... €  
 • Pet (cf. campsite rates) ..... € x ..... nights = ..... €

### Cost of the Stay

- Total cost of the stay: ..... €

☐ I wish to sign up for insurance  Total cost of the stay (excluding administrative fee and tax) x 2.9% ..... €

- Tourist tax included

• Administrative fee ☐ Week: ..... 20€

☐ Weekend : ..... 10€

Report of total rental or campsite EXTRAS ..... €

• TOTAL COST OF YOUR STAY: ..... €

• Deposit\*: ..... €

\* If the reservation for Camping Le Pipiou takes place more than 30 days before the date of the stay, a deposit of 30% of the total cost of the stay + an administrative fee will be required, and the remaining balance must be paid 30 days before the starting date of your stay, at the latest. \* If the reservation for Camping Le Pipiou takes place less than 30 days before the start of your stay, you must pay the total cost of your stay upon reservation. Complaints. Any client wishing to make a complaint should contact the campsite complaint service: - by post with confirmation of receipt to the campsite address The campsite will reply to the client within two months. When no amicable solution can be found, and if the issue persists, without prejudice to take legal action, the Campsite will offer to call a mediator: SAS Médiation Solution : 222, chemin de la bergerie - 01800 Saint Jean de Niost - contact@sasmediationsolution-conso.fr - https://sasmediationsolution-conso.fr/

### Payment method (upon reservation)



- ☐ Bank transfer: BNP PARIBAS - IBAN FR76 3000 4003 0500 0103 0026 645 - BIC BNPAFRPPXXX (Option to stagger the transfers via our website.)

- ☐ I declare that I have read and understood the General Conditions of Sale set out above  
 and that I accept them without reservation.

- ☐ I agree that the information entered into this form will be handled in the  
 context of the rental and the resulting business relationship.

Place ..... Date .....

Signature required:



# Le Pipiou

## Camping - Club



Information and bookings: [www.camping-pipiou.fr](http://www.camping-pipiou.fr) - Tel : +33 (0)5 58 78 57 25



### ACCESS



Bordeaux Airport 77 km



Nearest train station: Ychoux, then paying shuttles from the station to Parentis, more information at [www.rdtl.fr](http://www.rdtl.fr)



GPS : 44.3450469 , -1.10027249

N10 - EXIT 17 (YCHOUX/PARENTIS)

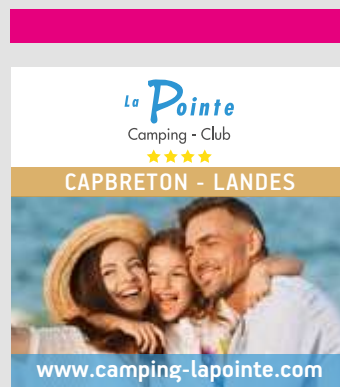
direction Parentis en Born / Biscarrosse.

Nearby major cities: Arcachon 40 km - Bordeaux 80 km

Bayonne 120 km

ASP EDITION WEB - Tél. 05 59 03 35 62 - Graphiste: Benoît Bernardin

## OUR PARTNERS DESTINATIONS



### Camping Club Le Pipiou ★★★★★

382 Route des Campings - 40160 Parentis-en-Born - Tél. : +33 (0)5 58 78 57 25

contact@camping-pipiou.fr - [www.camping-pipiou.fr](http://www.camping-pipiou.fr) -  